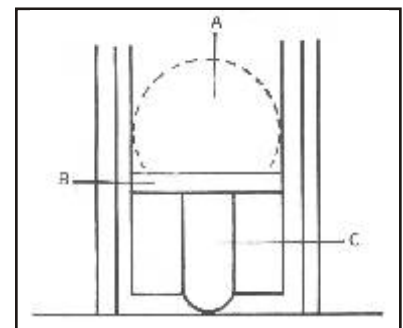
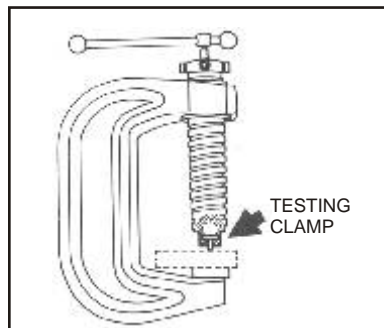
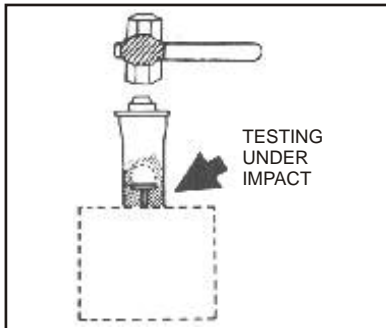


Pin Brino[®]
Portable Brinell Hardness Tester for Metals
 MODEL : DHM



PRINCIPLE

This instrument is based on a new but proven constant loading system which produces clear impressions capable of indicating accurate results whether applied statically or dynamically. Loading is guaranteed constant due to a precision pin shearing off under impact.



- A - CAVITY
- B - SHEAR PIN
- C - INDENTOR

10 GOOD ADVANTAGES OF PIN-BRINO®TESTERS OVER CONVENTIONAL POLDI TYPE TESTERS USING BARS:

- * Only one reading is taken which remains as a permanent record for checking in future
- * Constant impact load on specimens guaranteed
- * The pins cover the entire 100-650 Brinell range
- * Smaller and narrower surfaces can be tested
- * One impression measurement means no further computations required
- * Penetrator is longer lasting compared to a standard Brinell Ball
- * Dynamic and Static methods of testing possible
- * Increased accuracy comparable to any other portable Brinell Tester .
- * Portable Brinell Tester to measure hard C.I. accurately
- * Tests performed at a faster rate

Pin Brino[®]

Portable Brinell Hardness Tester for Metals

PIN-BRINO[®] DYNAMIC

MODEL: DHM

APPLICATIONS:

The dynamic application of the Pin-Brino[®] system is suitable specially when the size of the work-piece makes it difficult or possible to hold in a vice.

It is widely used in measuring hardness of castings, forgings, billets, moulds, dies, bars, rails, shafts, round & profiled steel sections, sheets from 6 mm and above, coal pulverisers and related equipment.

OPERATION :

Prior to each test, a small steel calibrated pin, specially designed and ground for strength and precision, is inserted into the penetrator. Load is applied by the blow of a medium heavy hammer (2 kg) causing the indenter to shear the pin, and an impression is obtained on the specimen. Variations in impact load are immaterial, since only the impact load required to shear the pin is applied on the indenter, and no more. Special tables provided with the instrument give the hardness corresponding to the diameter of impression.

TECHNICAL DATA:

Range	BHN	: 100 to 450 with a standard indenter
	BHN	: 230 to 650 with a special carbide indenter on specific order
Dimensions		: 240 x 115 x 55 mm
Weight		: 1.25 kg
Accessories		: The tester is supplied in a deluxe wooden box with 50 pins, tables & instructions for use, and a 10x MAGNIFI-SCOPE [®] measuring magnifier.

PIN-BRINO[®] STATIC

MODEL: SHM

APPLICATIONS:

The static application of our system is capable of producing results which approach those of a bench type testing machine. The whole screw assembly can be easily removed and inserted in other clamping devices which customise testing equipment. It can also be used for dynamic applications. This clamping support when bolted to a bench facilitates testing of successive small parts. It is capable of testing small and large parts with equal accuracy.

OPERATION:

A wide threaded spindle lowers the penetrator rapidly onto the specimen. Then a smaller drive screw takes over and, after 2 to 3 turns, breaks the pin. This produces an impression which is converted into Brinell hardness number from the special tables provided.

TECHNICAL DATA:

Range	BHN	: 100 to 450 with a standard indenter
	BHN	: 230 to 650 with a special carbide indenter on specific order
Dimensions		: 400 x 230 x 85 mm
Weight		: 7.0 kg
Accessories		: It is supplied in a deluxe wooden box with 50 pins, 1 vice, 3 anvils, tables & instructions for use, and a 10x MAGNIFISCOPE [®] measuring magnifier.